



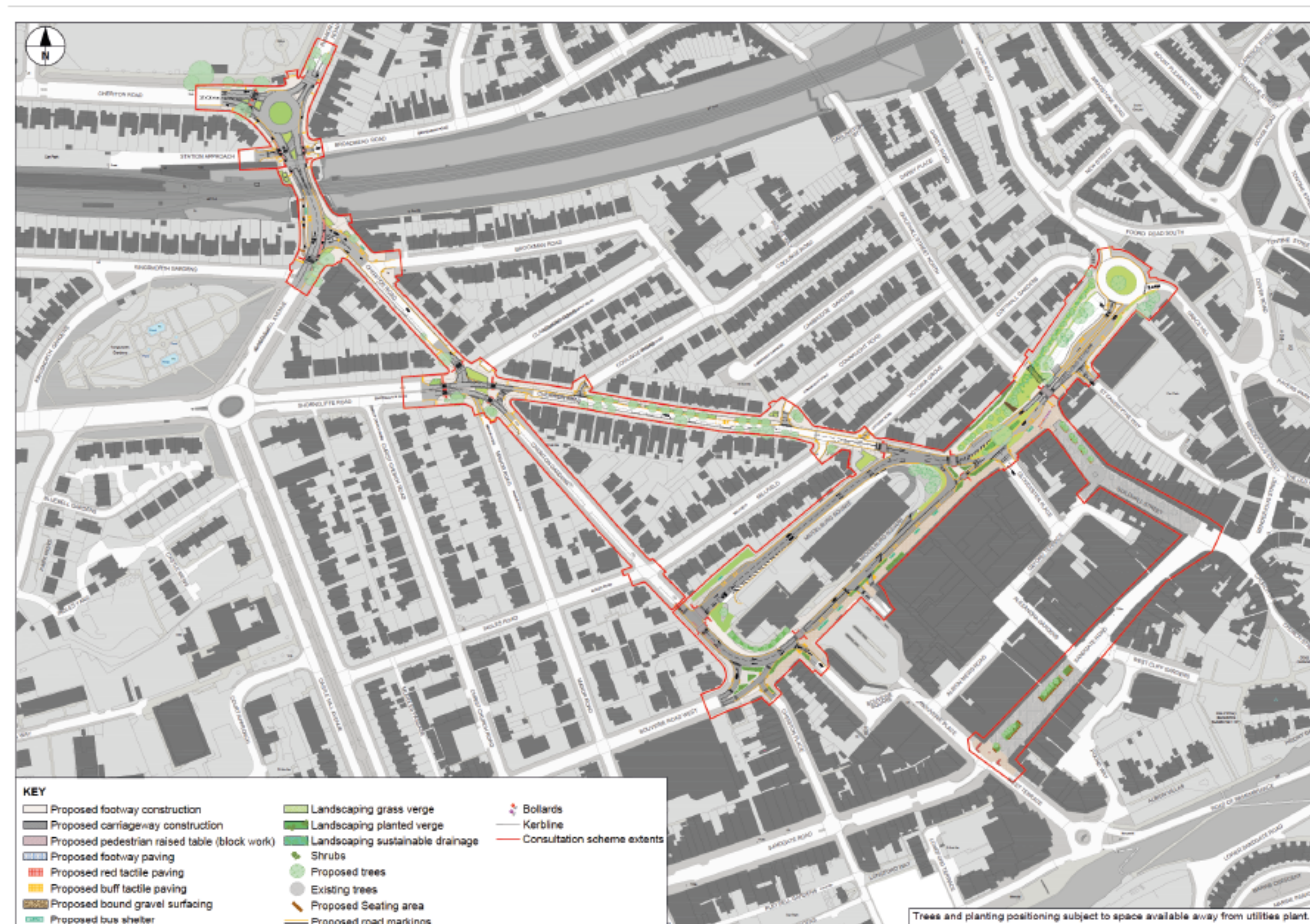
Welcome and introduction

The Folkestone – A Brighter Future project will use £19.8m of government funding to transform Folkestone town centre. Folkestone & Hythe District Council and Kent County Council are working with partners AECOM and Jackson Civil Engineering to deliver the scheme. AECOM has created the design for the project and Jackson Civil Engineering will bring it to life.

These plans for improvement have been in the pipeline for a long time – with the majority identified back in September 2021 as part of the Folkestone Place Plan. We are delighted the physical elements of this project will kick off this month. The project is due to complete in Summer 2026.

Three separate engagement events have been held to consult with people about the project. These took place in July 2023, November 2023 and March 2024. We received valuable feedback from the community and significant changes were made to the designs as a result.

We have moved on from consultation to delivery now and this engagement is all about discussing the development work and sharing what Folkestone town centre will look like once the improvements are complete.





Future Folkestone loading...

The Folkestone – A Brighter Future project will transform the town centre for residents and visitors by creating a more accessible, modern, and vibrant community.

The planned infrastructure improvements include upgraded roads and pedestrian walkways making travel easier and more efficient, reducing congestion and improving connectivity.

A key part of these improvements is the transformation of Bouverie Square into a new public space. This revitalised area will provide a welcoming environment with greenery and modern lighting. New seating will encourage people to gather, relax and enjoy community events. It will enhance the town centre's appeal, benefitting local businesses and creating a more attractive space for everyone.

With these changes, Folkestone is set for a brighter future – one that fosters community pride, attracts investment, and ensures the town continues to thrive for generations to come.





Project overview

The Folkestone – A Brighter Future project is being delivered in following phases:

This first phase is anticipated to run from the start of the works on 7 April 2025 to the end of May 2025.

This phase of the works will consist of initial enabling works and set up of the site compound within the Foresters Way Car Park. This will also include the closing off of Foresters Way to vehicular traffic alongside the realignment and construction of the new carriageway/footway provision along Foresters Way/Shellons Street. The bus stop adjacent to the Foresters Way Car Park will be temporarily suspended during this period.

The next phase of the works will see the start of the improvements to be made around Middelburg Square including the infilling of the two subways at the junctions with Cheriton Road and Cheriton Gardens and the creation of the new signalised traffic junction at the Middelburg Square/Cheriton Gardens Junction.

Works will also take place along the southern extent of Middelburg Square including the construction of the new footway.

Other preparations will begin for the new linear bus stop arrangement along Middelburg Square. All bus stop works on Middelburg Square will be completed before the existing bus station in Bouverie Square is closed, this is currently programmed for mid-July/early August.

During this phase, the proposed improvements around Radnor Park Roundabout will also start, including the installation of the new cycle lane and construction of the junction with Station Approach overnight time working. Additionally paving/tree works along Sandgate Road will take place.

This phase of the works will run for several months starting in May 2025 and is likely to overlap with Phase three given the interconnectivity of the scheme.



Project overview

Phase 3

Phase three will start in July/August 2025 and will run into the early part of 2026.

It will consist of works along Cheriton Road between Shorncliffe Road and Middelburg Square. This will include several utility diversions and the construction of the proposed rain gardens and associated footway build outs. Similar works activities will also take place at the Shorncliffe Road junction.

Works around Middelburg Square will continue to tie into the works being completed along Cheriton Road.

Paving/tree works along Guildhall Street will also start during this phase.

Phase 4

Phase four will start in January 2026 and run for several months.

This phase will see the start of the transformation of Bouverie Square from the existing bus station into the proposed new green space. Notable activities during this stage include the installation of an infiltration tank within the square itself.

This period will also see the implementation of one of the key aspirations of the projects with the installation of a shared foot and cycle bridge to connect Guildhall Street North to Guildhall Street.

Works will continue along Cheriton Road during this period and on sections of Middelburg Square as the scheme moves towards the final phase.

Phase 5

This is the final phase of the works consisting of improvements to the Cheriton Road/Castle Hill Avenue Junction and works on Shellons Street.

The works compound within Foresters Way car park will be demobilised and activities such as final surfacing will be undertaken ahead of completion of the works in Summer 2026.

What it means for you

The Folkestone – A Brighter Future project is a significant development and partners will be working hard to minimise any potential disruption.

Traffic management measures will be in place to allow the works to take place as safely and efficiently as possible. Any necessary diversions and road closures will be notified via signage on site, including the display of permit boards with the permit number for the specific diversion/road closure.

Further information on planned or existing roadworks can be found on the KCC website at the following address: kent.gov.uk/roadworks

Regular updates are also posted via the Kent Highways account on X at x.com/KentHighways

The bus station will close during phase two of the project.. We are working with Stagecoach to agree temporary bus stop locations, alongside the permanent replacement stops in Middelburg Square, which will be available prior to the current bus stop closing. Information about these alternative arrangements will be communicated widely in advance of them starting through various channels including Folkestone & Hythe District Council's website and social media channels, Stagecoach's channels and monthly project updates from Jacksons. Please see the next board to find out how to stay in the loop.

All work on the Folkestone – A Brighter Future project is due to be completed by Summer 2026. There will be a final landscaping visit to add trees in the Autumn when they are most receptive to planting.


Next steps


Folkestone & Hythe District Council will be sending out monthly project newsletters and these will also be available on the council website.

These will include progress updates from project partners as well as notifications of upcoming traffic changes or potential disruption. You can sign up for these newsletters online at folkestone-hythe.gov.uk/FABF



You can also find out more about the Folkestone – A Brighter Future project on the district council website including details of past engagements, a timeline and project plans.

 /FolkestoneandHytheDC

 @fstonehythedc

 Folkestone and Hythe District Council

 @folkestonehythedc

Queries about the development during the project should be directed to Jackson Civil Engineering by emailing folkestone@jackson-civils.co.uk or calling their local representative on the project on **07974 416435**.

Overview

Final designs for Bouverie Square



Overview

Road visualisations

Top of Cheriton Road (Northbound)



Top of Cheriton Road (Southbound)



Cheriton Road/Gardens junction

