

Folkestone – A Brighter Future

Newsletter Issue 4



To members of the public,

As you are aware the Folkestone 'A Brighter Future Scheme' has progressed significantly in July. We have successfully switched traffic management along Shellons Street, erected safety fencing - including lane closures to Shellons Street westbound - and have installed further footway signage in this area. The original lane along Foresters Way has now been closed off and is now currently being used as a compound/ storage area.

Traffic Management

We are currently working on Phase 2B of the scheme at Radnor Park roundabout, the four-way lights will be in place till October. Lane two and the island crossing located at Middelburg Square East will remain closed. The lane closure of Middelburg Square South is ongoing till September and works along Shellons Street westbound (outside Lidl) will continue until mid-August 2025.

The latest traffic management plans can be found at folkestone-hythe.gov.uk/fabf-phase-two

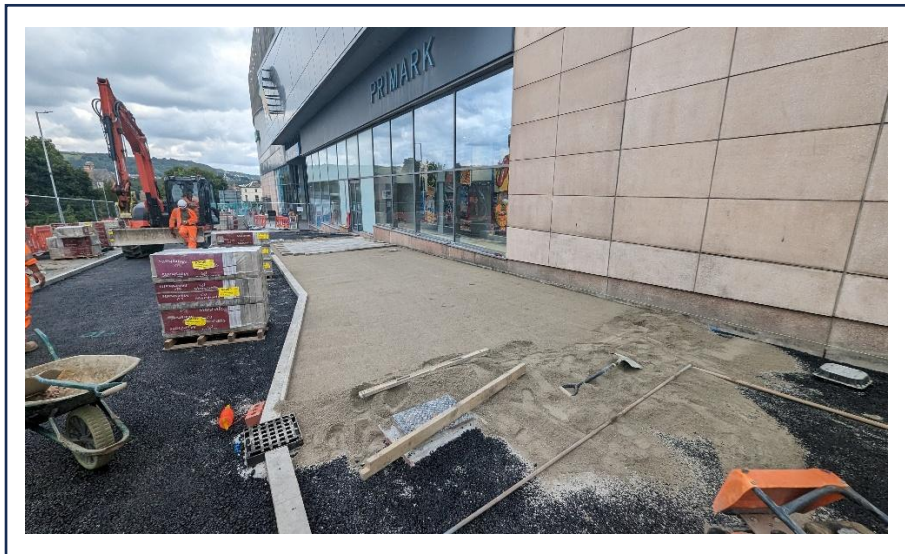
Progress update and upcoming works

Phase one of the island infill works at Radnor Park roundabout is now complete and we are progressing with the footway works. We are aiming to have completed enough work to remove the four way-controlled traffic lights by mid-October 2025. We have successfully dug out trial holes along Radnor Park roundabout for buried services, switched the traffic management, and erected safety fencing. We have done this so we could complete footway works outside of The Park Inn. removing unnecessary kerbs and footways and replacing these with new materials.

We have also now successfully completed the subway infills in and around Middelburg Square. Both pedestrian subways have been filled with foam concrete, facilitating the construction of the new Bellmouth junction and a signalised crossing at Middelburg West. We are currently carrying out gas diversion works along Cheriton road to complete our excavation for a rain garden in this area. This work started on 21 July and is expected to continue for a total of eight weeks. =

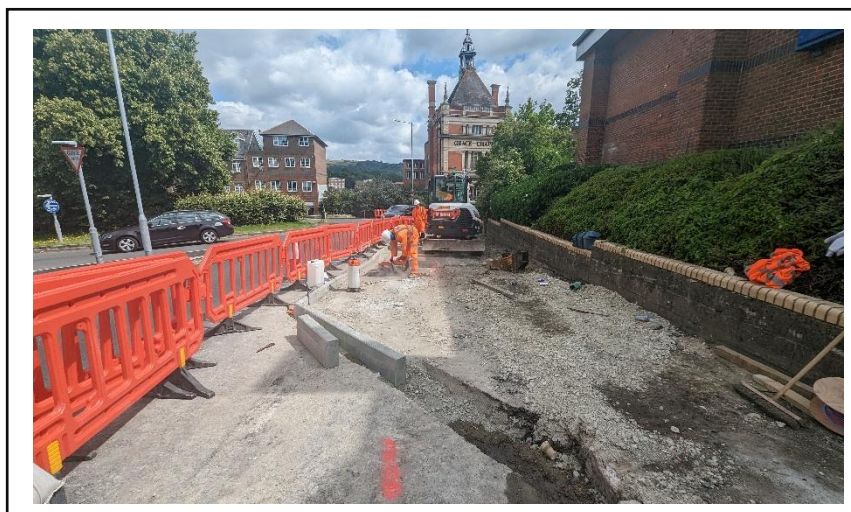
We have made progress with the construction of the widened footways for the new bus stops along Middelburg Square South. The bus station will now close on the 20th of September 2025. Signage and temporary stops will be put in place to ensure any service disruption is kept to a minimum.

Progress Photos



Widening of footways located at Middelburg Square South for new bus stops.

There is now one lane of traffic along Shellons Street, here you can see where we are in the process of widening the footpath for a safer pedestrian crossing.



Here we are breaking out redundant footways by Radnor Park roundabout, these will be replaced with new materials.



Community works

Jackson Civil Engineering attended St Eanswythes Primary school on the 1st of July and conducted a site health and safety assembly for the whole school. Two Public Liaison Officers and one of our engineers from the southern region talked to the pupils about the potential dangers of construction sites. Many pupils engaged in this activity and understood how they can stay safe. We have also been engaging with local charities and have much more planned for the near future.

For more information on the roads scheme, please visit Kent County Council's website.

<https://www.kent.gov.uk/roads-and-travel/road-projects/planned-road-projects/folkestone-a-brighter-future>

For more information about Folkestone – A Brighter Future please visit Folkestone & Hythe District Council's website www.folkestone-hythe.gov.uk/FABF

For any further enquiries, please send an email to Folkestone@jackson-civils.co.uk or call the Jackson PLO on 07974 416435

