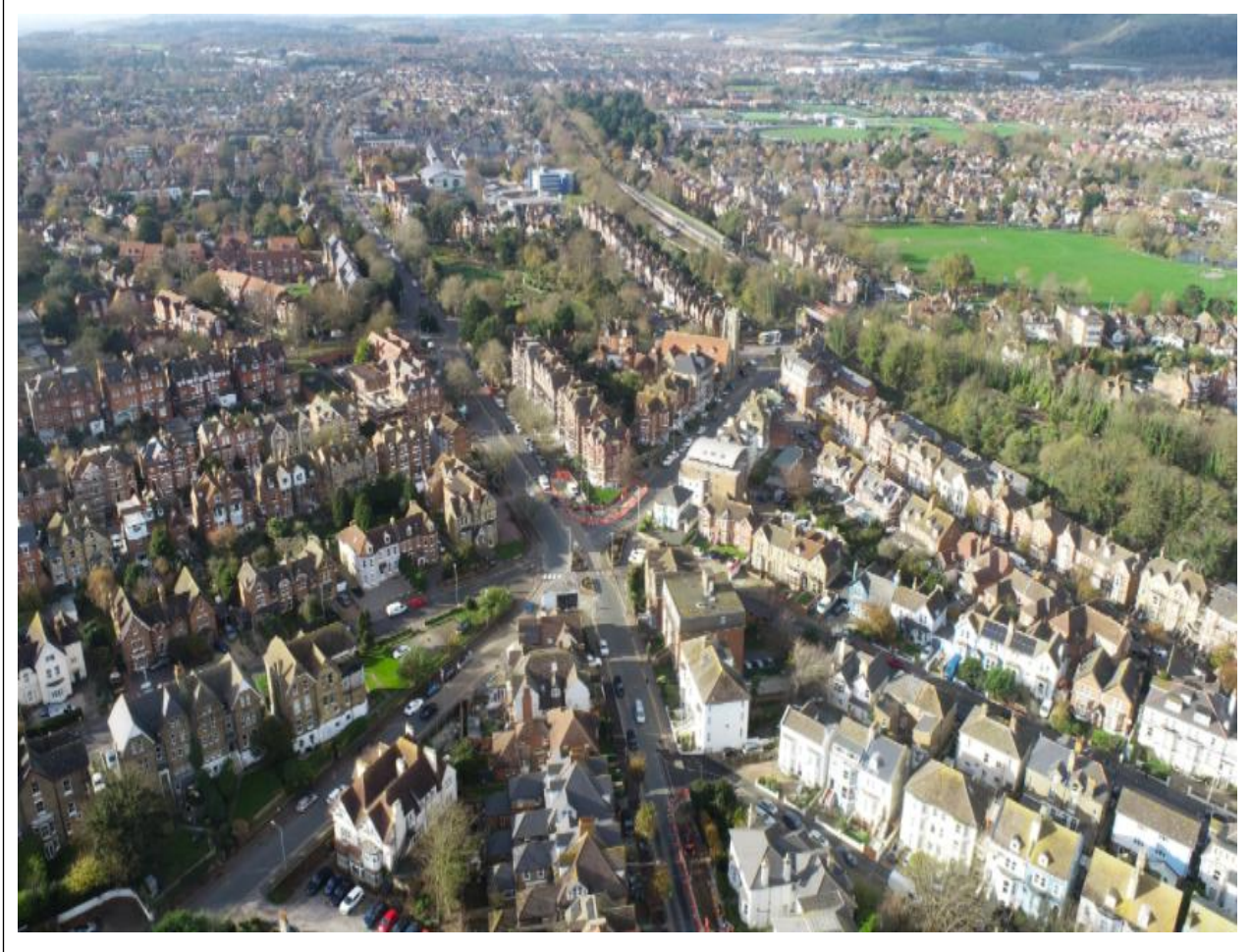


Folkestone – A Brighter Future

Newsletter Issue 8



Aerial shot of Cheriton Road/ Shorncliffe junction.

To members of the public,

The Folkestone – A Brighter Future project has been progressing well in November. Please find our latest updates below:

Radnor Park roundabout

As you may be aware, the lights at Radnor Park roundabout have now been removed and traffic is flowing as normal. Over the past month, overnight works took place to resurface the area and complete the new road markings. New planter islands were also built with topsoil ready for landscaping works which will be carried out in March 2026. Ample notice will be given to residents before further works are carried out.



New zebra crossing, and Belisha beacons have been installed, creating safer crossing points, and cycle lanes.

Newly constructed planters, and prepared topsoil

Shellons Street/ Guildhall Street

Works are progressing well with new granite paving being installed along the street and at shop entrances. This repaving work will continue throughout December. Access will be provided to pedestrians and for loading, and all shops will be informed before these works go ahead.

A brick culvert was found during excavations in Guildhall Street which has caused a slight delay. An archaeological watching brief is in place for the works for any excavation works that exceed one meter. The rationale for this requirement is due to the urban environment and the fact that most of the excavation works are shallow and/or in made ground, ground that has been previously excavated. However, if any significant items are identified within excavations of any depth works will be halted

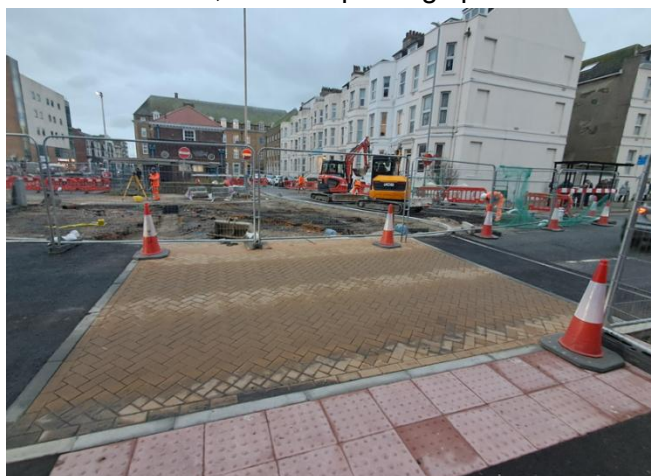
until an archaeologist has reviewed and cleared works to start again. An archaeologist is currently on site observing and recording the rain gardens works currently underway along Cheriton Road. The archaeologist is also monitoring the excavations taking place at the junction of Guildhall Street and Shellons Street and in Sandgate Road. Other finds have included small wall fragment, a lime mortar wall fragment which had a curved element and was rendered on the inside and a brick culvert on Sandgate Road. Updates about further findings will be published in future newsletters/ updates.

Middelburg Square

Over the past month at Middelburg East, we have been carrying out drainage works. This has included excavating and connecting to existing gullies and completing a vacuum excavation near live services. We have also started work on new footways in the area and installed new kerbs and edgings. These works will continue until mid-December.

Throughout November at Middelburg West, we carried out drainage and connection works, traffic management was switched so we could break out redundant kerbs and install new gullies. We began the widening of Middelburg Square West Road to its full width and installed temporary road markings. We then started the construction works for a new tabletop crossing on the road. We broke out redundant footways; vacuum excavated near live services and installed new street lighting ducts. We then installed new tactile and corduroy paving slabs, installed footway base, binder and surface course. Over the next month we will begin constructing further tabletop crossings; to safely complete this we will need to close off a section of Bouverie Road West eastbound. A diversion will be in place via Castle Hill Avenue. Traffic from Middelburg Square travelling up Bouverie Road West towards Tesco Express will not be affected. This will go ahead from Friday 28th November until Friday 19th December.

During November at Middelburg South we have been continuing with new carriageway works, traffic was temporarily diverted through the redundant bus station, and two parking spaces were temporarily suspended. Over the next month we will need to complete some overnight works in this area so we can install asphalt to the raised tabletop and ramps and install granite paving. Ample notice will be provided to residents and businesses before these works take place.



Tabletop crossing – Middelburg Square South

Shorncliffe Junction

As you may be aware we have started working along Shorncliffe junction. In this area we have successfully switched traffic management, erected safety fencing and slightly narrowed lanes. We have disconnected and removed redundant Belisha beacons and signs, broke out redundant kerbs and footways, and have removed redundant railings. We have installed new streetlighting ducts, installed and energised new streetlighting columns. Over the next upcoming month, we will be installing new kerbs and edgings, footway covers, tactile and corduroy paving slabs, new Belisha beacons and signs.



Current works at Shorncliffe Junction.

Cheriton Road

Along Cheriton Road we have been successfully continuing with the drainage works for the newly constructed rain gardens. We have excavated, installed new pipes, connected to sewer chambers and have filled areas with landscaping materials. Allowance for vacuum excavation took place near live services and we have begun installing kerb base ready for the installation of new kerbs. Over the next upcoming month, we will continue these works gradually down Cheriton Road, towards the town centre.



Newly constructed junction – Cooling Road.



Community works

Over the past month we have been in touch with local schools and community groups; we have some upcoming projects and opportunities we are very much looking forward to. An update on future projects will be published in the next newsletter.

If you have any concerns or queries or would like to know more about the scheme, please reach out to our local Public Liaison Officer. We would like everyone to feel a part of this scheme and have their voices heard.

For more information on the roads scheme, please visit Kent County Council's website.

www.kent.gov.uk/folkestoneabrighterfuture

For more information about Folkestone – A Brighter Future please visit Folkestone & Hythe District Council's website: www.folkestone-hythe.gov.uk/FABF

For any further enquiries, please send an email to Folkestone@jackson-civils.co.uk or call the Jackson PLO on 07974 416435.

