

Folkestone – A Brighter Future

Newsletter Issue 12



Shorncliffe Junction / Cheriton Road

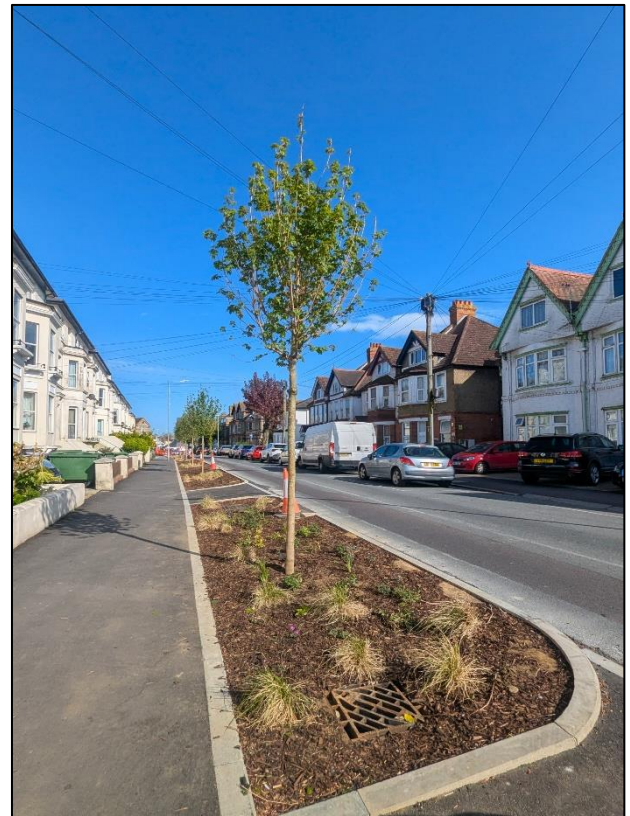
To members of the public,

The Folkestone - A Brighter Future Scheme is now over 60% complete.

Cheriton Road

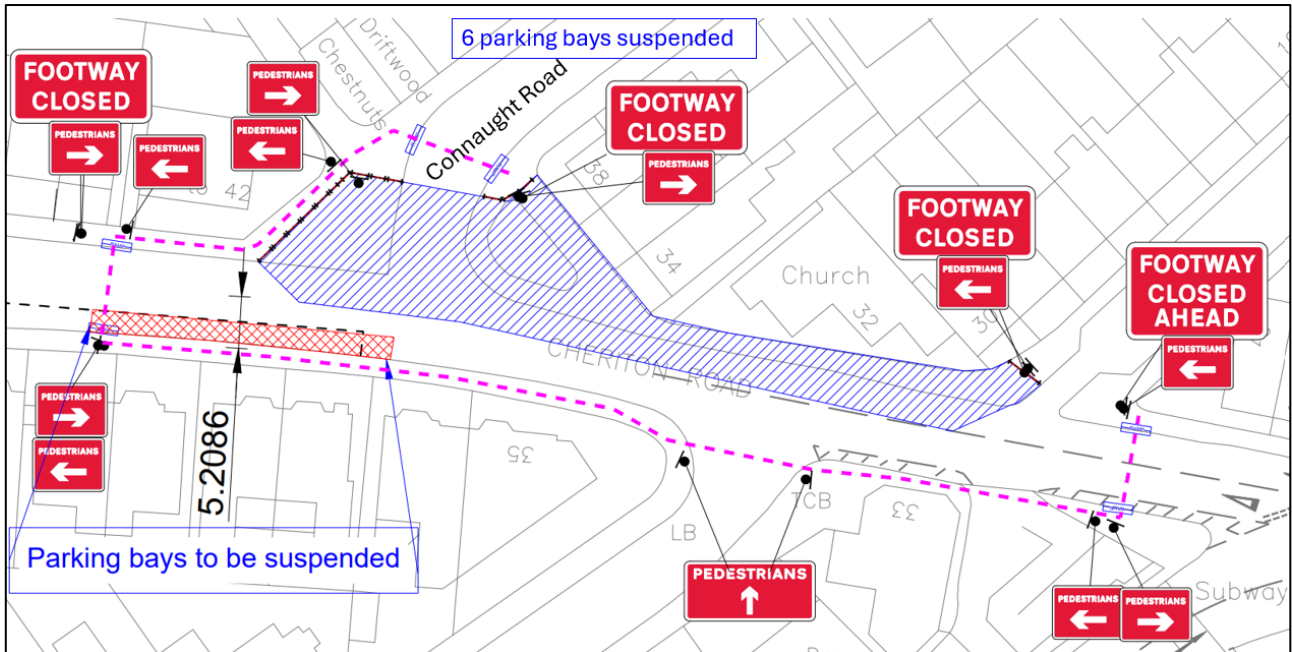
We are completing drainage works along Cheriton Road and carrying out the final section of rain gardens. Excavations have been made, pipes have been installed and connected to sewer chambers, ground support has begun to be installed, and vacuum excavations have taken place near live services. Once this section is complete, we will work our way down towards Connaught Road and then Victoria Grove improving the footways. Safe and well signposted pedestrian diversions will be put in place while these works are carried out.

We have now successfully planted nine semi-mature trees along Cheriton Road.



For two weeks from the 13th of May the end of Connaught Road leading into Cheriton Road will be closed so we can safely carry out footway works. During this time, we will break out redundant footways, break out for tabletop crossing, install road crossing kerbs and install asphalt to table ramps. While these works are taking place six parking spaces at the end of Connaught Road will be temporarily suspended to allow vehicles to use area as a turning place.

A vehicle diversion will be provided via Brockman Road and Guildhall Street North.



Shorncliffe Junction

In this area we have completed footway works, installed surface course, corduroy paving slabs, and carried out surfacing works. A series of overnight works also took place at the Shorncliffe junction. Traffic management signage was erected, traffic was diverted and safe temporary pedestrian crossings were installed. Binder course and asphalt was reinstated to the roads, then road markings including zebra crossings were introduced. High friction surfacing is next to be installed to the roads in early May. This addition will contribute to the safety of all road users, including pedestrians.



Station Approach / Radnor Park Roundabout

We have recently started works at Station Approach, installing temporary traffic lights and erecting both safety fencing and footway signage. We began removing and disconnecting redundant zebra crossing beacons, broke out redundant islands and provided allowance for vacuum excavations. Once this was complete, we then broke out redundant kerbs and footways, and railings were taken down in preparation for upcoming works. Over the next month new kerbs, paving and surfacing will be reinstated to the footways. Recently UK Power Networks investigated a fault with buried utilities. This meant JCE was unable to work on the site temporarily. Thankfully, this has now been resolved and works have restarted. The end date of these works has not been affected.

Guildhall Street

Unfortunately, there is no comprehensive map of underground utilities and information on the exact position of these is usually obtained by drilling trial holes. Trenches have now been dug along Guildhall Street to inform us of the position of utilities and how these could affect the planned planting. It is still our ambition to plant trees in Guildhall Street, and we are meeting with the utility provider - Affinity Water - at the earliest opportunity to work out if we can make this happen.

Once this information has been reviewed work in this area will restart. We will update you as soon as we have confirmation.

Sandgate Road

Works have been progressing well along Sandgate Road, with the paving complete, topsoil installed to planters, and benches and bike hoops have been put into place. We will remain in Sandgate Road until mid-May. We anticipate approximately two additional weeks of outstanding works, primarily focused on the four planters. These works will mainly involve installing the ducting required for the four market trader feeder pillars.

Middelburg Square East

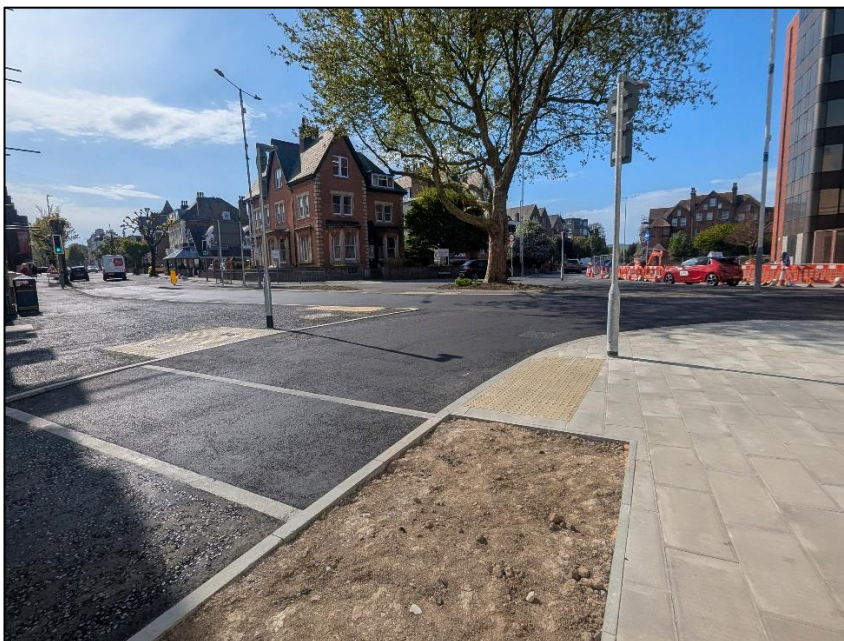
Throughout April we have been continuing installing flag paving which is now almost complete.

Drainage works consisting of new gullies and connections were carried out. We have also started carriageway works; block paving has been installed to the road which will be complete by mid-May. Throughout May we will begin the island works; redundant kerbs, footways and railings will be broken out, and new kerbs and edgings will be installed.



Middelburg Square West

New drainage, road and footway works were successfully carried out over the past month in this area. Several planters were excavated and filled with soil, edgings, kerbs and footways were installed and surfaced. Flag paving was laid onto footways in addition to tactile and corduroy paving slabs, and roads were resurfaced. Cheriton Place and Bouverie Road West was then opened on the 24th of April. We would like to thank all residents and businesses for their patience during the closure period.



Entrance of Cheriton Place/Bouverie Road West

Bouverie Square public realm area

Throughout April drainage and ducting works took place to facilitate the public realm area. Ground works are progressing as planned, benches adjacent to the existing bus stops will be installed throughout May and infiltration tank works will be completed.

Archaeology

The archaeological watching brief has been ongoing in both Bouverie Square and Cheriton Road, there have been no recent findings to record in these areas. Test pits were also monitored along Guildhall Street which only revealed modern services.

Community works

Continuing public engagement with local businesses and stakeholders took place in April, informing residents of upcoming works and updates. Multiple letters containing details and dates of works to be expected were distributed to those directly affected.

Jacksons hosted a STEMstruction event at Folkestone School For Girls. During this time students were able to have an insight into not only the construction world, but what essential skills are needed to help us learn, work with others and to succeed in life. The students were able to design their own 'green spaces' and thought into detail about how they could make these spaces sustainable, accessible and enjoyable for all.

For more information on the roads scheme, please visit Kent County Council's website.

www.kent.gov.uk/folkestoneabrighterfuture

For more information about Folkestone – A Brighter Future please visit Folkestone & Hythe District Council's website www.folkestone-hythe.gov.uk/FABF

For any further enquiries, please send an email to Folkestone@jackson-civils.co.uk or call the Jackson Public Liaison Officer on 07974 416435