

PROJECT

Kent Cycling and Walking Infrastructure Plan

CLIENT

Kent County Council

CONSULTANT

AECOM Limited
Marlborough Court
10 Bricket Road
St Albans, AL1 3JX, UK
T +44-1727-53-5000
www.aecom.com

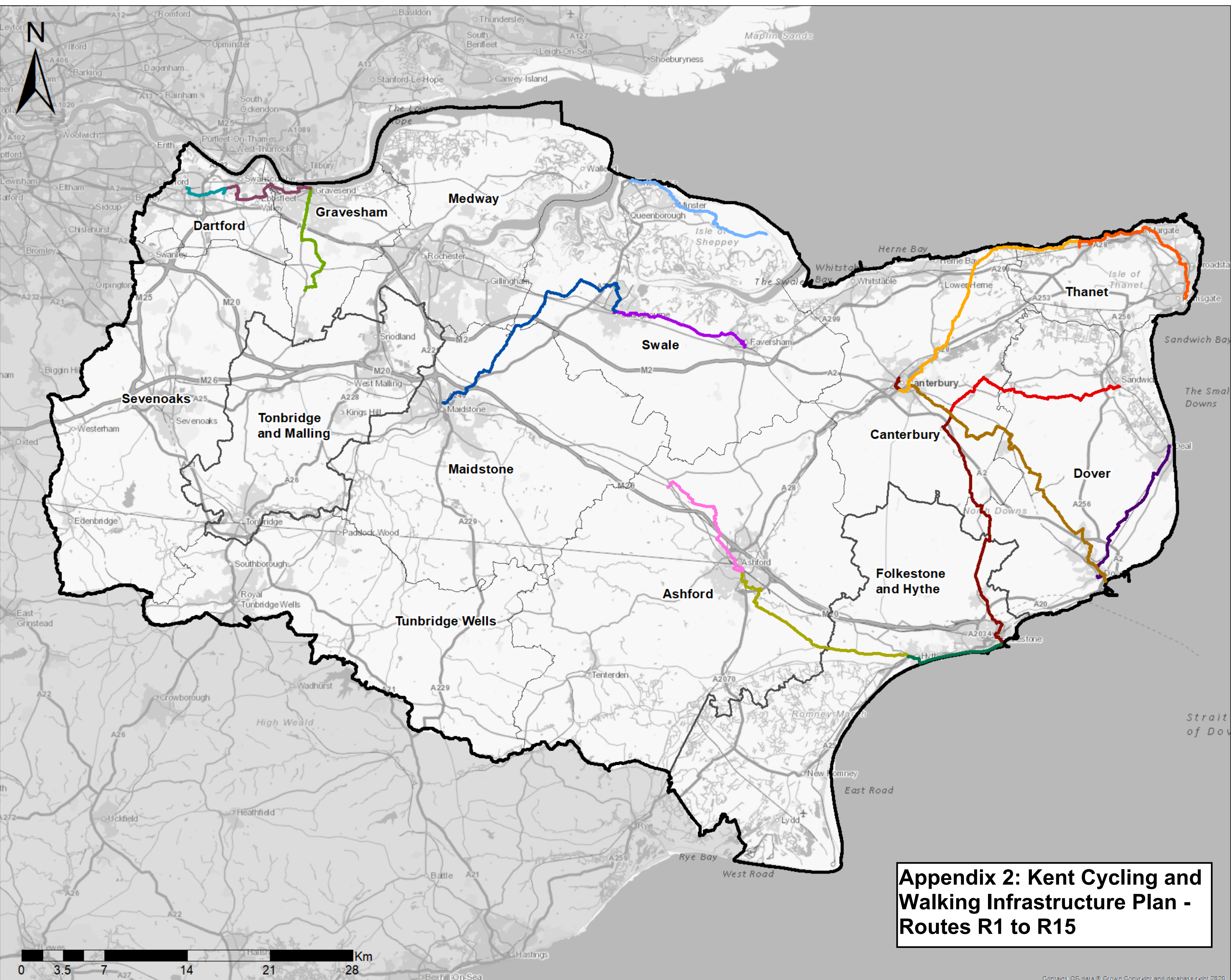
LEGEND

-  Study Area
-  District Council Boundaries
-  R1: Sheerness to Leysdown
-  R2: Gravesend to Dartford
-  R3: Canterbury to Dover
-  R4: Canterbury to Folkestone
-  R5: Sittingbourne to Faversham
-  R6: Birchington-on-Sea to Ramsgate

-  R7: Dover to Deal
-  R8: Ashford to Folkestone
-  R9: Canterbury to Sandwich
-  R10: Dartford to Stone
-  R11: Ashford to Charing
-  R12: Canterbury to Birchington-on-Sea
-  R13: Folkestone to Hythe
-  R14: Maidstone to Sittingbourne
-  R15: Gravesend to Meopham

NOTES

Contains OS Data © Crown Copyright and database right 2023



Appendix 2: Kent Cycling and Walking Infrastructure Plan - Routes R1 to R15